



EST. 1867

**EDUCATION**  
**CATALOGUE**



## Contents:

- » Company Background
- » Experience
- » Your Kit – Your Way
- » **NEW!** Fast Track Range
- » **NEW!** Impact Range
- » Dual Range
- » Camo Range
- » Fuse Range
- » Blade Range
- » Webshop
- » Size Guide

## NEW for 2025!

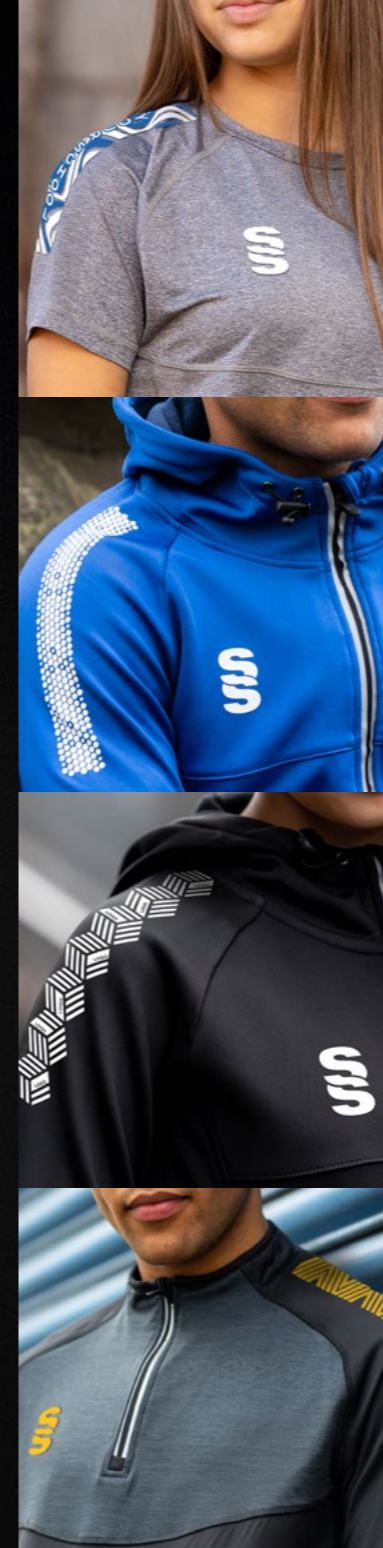
### WHITE LABEL

**Surridge is excited to be launching our very own WHITE LABEL range.**

This range will give you the opportunity to rebrand any of our **WHITE LABEL** products with your very own logos. Trust in our 150 years of experience to enhance your product offering to your customers.

**Premium Quality • Great Price • Your Brand**

*Look out for the logo throughout the catalogue.*



In 1867 Percy Stuart Surridge created a sports brand. He applied the principles of tradition and craft, with the concept of bringing innovation to improve performance, creating product defined by craftsmanship, originality and Britishness.

Today, we are a brand that not only connects with our markets and consumers but keeps with our origins and principle's set over 150 years ago.

Surridge Sport head office, warehousing and production facilities are based in Burnley, Lancashire. The site has in house embroidery, manufacturing, print and embellishment facilities along with a dedicated design and product development team and a fully equipped distribution/customer service team. This allows Surridge the flexibility to manage and service its portfolio of accounts simply and efficiently, maintaining day to day fulfilment of orders as well as looking to make improvements and handle any quick turnaround of kit that may be required. Careful planning with account management shall ensure the organisation's needs will be prepared for in advance and progressed in an organised and agreed fashion.

The company is wholly family owned in the UK and is self-financed operating from our own custom built facilities in Lancashire of 60,000 sq ft. We will be happy to produce copies of our audited accounts to satisfy any due diligence procedures and we formally extend an open invite to any of your personnel to visit us at any time.

Surridge Sport uses factories in the Far-East for production of the proposed range. We have developed strong relationships with the suppliers and have worked with them for many years. We also have employees based in the factories to help manage the supply.

## Objective

Surridge Sport aim to supply you with a commercially attractive proposal and a high performance playing and training range at competitive prices. We also guarantee a high level of contract management, quality of product and a seamless transition of supply.

*Crafted by Surridge*

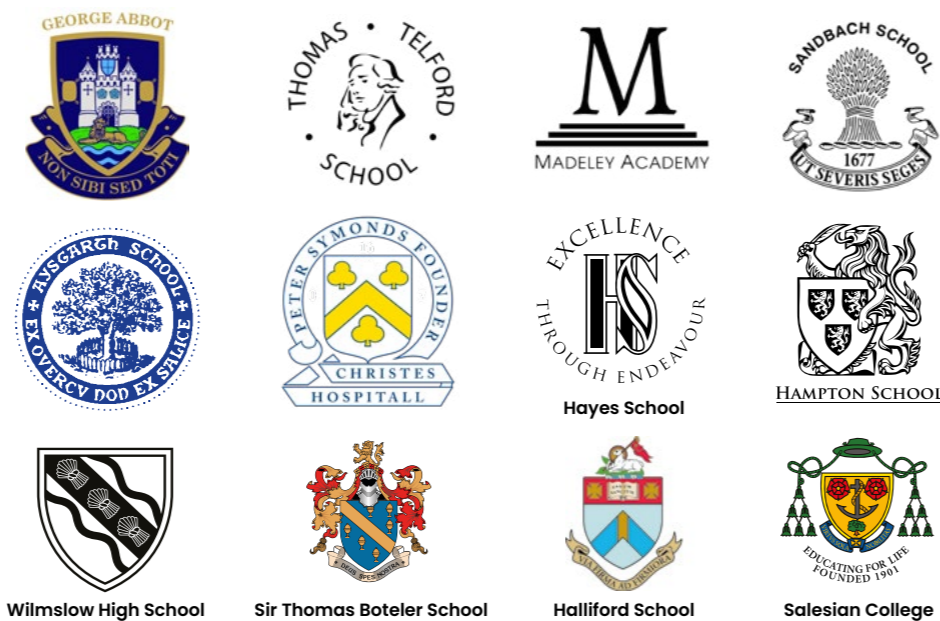
SURRIDGE



# Experience

After a rigorous process involving a variety of sports brands Cheltenham College decided to stay with Surridge for our sports kit provision. We have a long-standing and good relationship with the company and one that is not based purely on kit provision. Surridge have become part of College and understand our needs and demands of the school. The quality of kit provided for all pupils is modern, a competitive price and of an excellent quality that addresses the demands of sport in these modern times. Customer service is good, both parties understand the need to work collaboratively for the pupil's best interests and to ensure they are getting the best possible experience in the ordering and delivery of their garments.

**Tim Watts – Director of Sport**



# BESPOKE PLAYING KIT

Over 1000 designs to choose from – for more information visit the [surridge kitbuilder online](#)



# YOUR KIT – YOUR WAY

Bespoke playing kit available across 60 sports including Football, Athletics, Netball, Basketball & American Football

*Create your own*  
**BESPOKE  
SPORTS  
KIT**

With  
**60 SPORTS**  
to choose from, including:

- » CRICKET
- » FOOTBALL
- » RUGBY
- » HOCKEY
- » NETBALL
- » ATHLETICS
- » BASKETBALL
- » ROWING

with Surridge Sport, you can design  
**Your Kit, Your Colours,  
Your Way**



For more details scan the QR code opposite or visit [www.surridgesport.com/kitbuilder](http://www.surridgesport.com/kitbuilder)  
Compliment your design with our stock range of shorts and socks.



AVAILABLE IN A RANGE  
OF COLOUR OPTIONS



EST. 1867

Choose from our range of  
**60 SPORTS!**

*Create your own*

# BESPOKE TRAINING KIT

Compliment your sports kits with our range of bespoke training wear

- » HOODIES
- » TEK PANTS
- » SKORTS
- » QUARTER ZIPS
- » LEGGINGS
- » T-SHIRTS
- » SHORTS

**Surridge Sport**  
**YOUR KIT – YOUR WAY**



For more details scan the QR code opposite or visit [www.surridgesport.com/kitbuilder](http://www.surridgesport.com/kitbuilder)  
Compliment your design with our stock range of shorts and socks.



AVAILABLE IN A RANGE  
OF COLOUR OPTIONS

# SS

EST. 1867

**Surridge Sport**  
**YOUR KIT – YOUR WAY**



SSS

EST. 1867

*Crafted by Surridge*



SURRIDGE

# FAST TRACK FOOTBALL 3 WEEK DELIVERY

BESPOKE GAMES SHIRT DESIGNS CREATED FOR FAST DELIVERY



The above designs are available as **Short Sleeve Outfield** and **Long Sleeve Goalkeeper** in a selection of colour options.

## FAST TRACK DESIGN RANGE

The Range has been created with you in mind, INCLUDING the option too add your:

- » LOGO
- » SCHOOL CREST
- » NAME
- » NUMBER
- » SPONSOR

As many or as few as you'd prefer in a limitless range of colours.

## MAKE YOUR KIT STAND OUT!

Also available:

**FAST TRACK  
RUGBY** 3 WEEK DELIVERY

**FAST TRACK  
CRICKET** 3 WEEK DELIVERY

**FAST TRACK  
NETBALL** 3 WEEK DELIVERY



## SURRIDGE STOCK RANGE

Complete your bespoke football kit by adding Surridge Sports **stock range** of **shorts and socks**. See examples below:



**Surridge Match Short**  
SURF005



**Classic Short**  
SURF026



**Surridge Match Sock**  
SURF006



**Surridge Single Band Sock**  
SURF027

For the full range of sock colours, see back of catalogue.

**ALSO AVAILABLE:**  
**Surridge Womens Match Short**  
SUB-C-SHORTS-W005

Please note: These are **NOT** part of the Surridge Stock Range



## DISCLAIMER

\*Please note: Set **SURRIDGE** colours between shirts, shorts and socks may differ slightly due to variations in dyeing and printing methods. Although every effort is made to match colours, exact colour matches cannot be guaranteed.

## TO GET STARTED

Scan the QR code or visit [www.surridgesport.com](http://www.surridgesport.com) where you will find our full guide to the Fast Track range.



Available in Mens and Ladies Fits

Red



Reverse



Dual Trim Colour Options



Dual Trim Designs:

Dual Dots

Diagonal Stripe

## NEW! Impact T-Shirt DU382

- » 86% Polyester, 14% Spandex
- » Lightweight, performance enhancing fabric for premium comfort while training
- » Embossed design detail for increased durability and longevity
- » Specially designed construction to allow for optimum movement
- » Mesh under arm panels provide fast drying and ultimate cooling
- » Create your own look with unlimited print design options
- » Fabric weight: 180gsm

### Unisex Sizes

SJ S M L XL XXL XXXL  
XXXXL XXXXXL

### Ladies Sizes

XS S M L

NEW!

Dual Stripe design also available



Black

Royal

Navy

Available in Mens and Ladies Fits

Black



Dual Trim Colour Options



Dual Trim Designs:

Dual Dots

Diagonal Stripe

## NEW! Impact 1/4 Zip Performance Top DU383

- » 95% Polyester, 5% Spandex
- » Lightweight and breathable whilst providing warmth and comfort
- » Embossed design detail for increased durability and longevity
- » Fast wicking and quick drying fabric offering premium moisture management to keep you warmer for longer
- » Specially designed construction to allow for optimum movement
- » Extendable thumbholes for extra comfort and warmth
- » Adjustable draw cords in the hem for a perfect fit
- » Create your own look with unlimited print design options
- » Fabric weight: 220gsm

### Unisex Sizes

SJ S M L XL XXL XXXL  
XXXXL XXXXXL

### Ladies Sizes

XS S M L

NEW!

Dual Stripe design also available



Royal

Navy

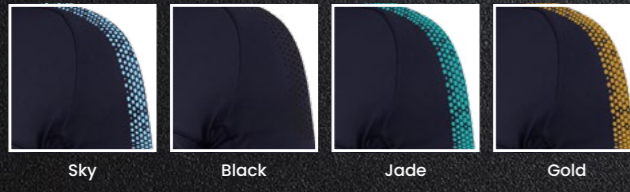
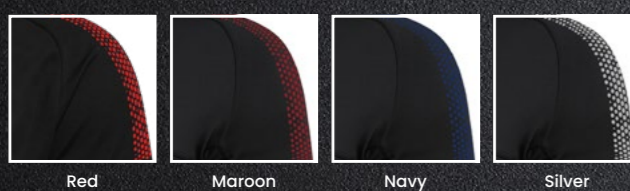
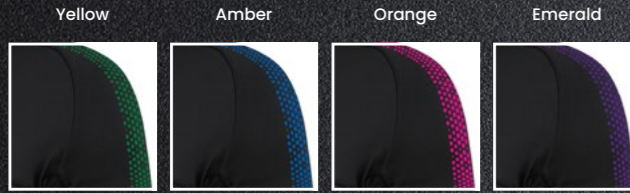
Red



# DUAL TRAINING RANGE

## YOUR COLOURS YOUR WAY

Our entire Dual Range is available in 17 SS colours or choose unbranded - without SS branding



### Dual Trim Colour Options



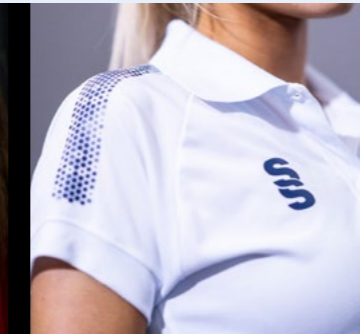
Black  
White  
Mens Fit



Navy  
White  
Ladies Fit



Dual Trims = Dual Dots and Diagonal Stripe

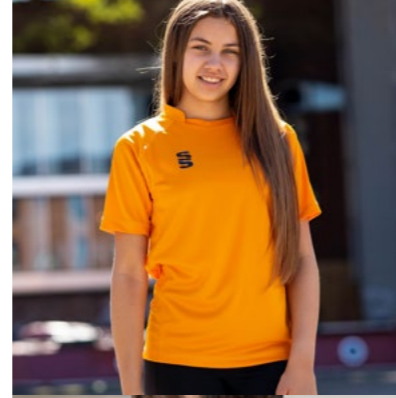


# DUAL TRAINING RANGE



We can also produce a bespoke Dual Trim with a minimum of 100 prints (50 garments)





Navy Emerald



Bottle White



Maroon White



Amber White



Black White



Red White



Royal White



White Black



Sky White



Orange White



Purple White



Emerald White

# Dual Training Shirt DU009

- » Performance Polyester pique fabric with contoured underarm side panel in breathable reverse pique fabric
- » Forward side seam detail with flat-lock stitching for the ultimate smooth and comfort
- » Stand collar and raglan seam sleeve and contrast colour graphic print available on shoulders
- » Contoured underarm side panel in breathable reverse pique fabric

### Unisex Sizes

SJ MJ LJ YTH  
S M L XL XXL XXXL

**NEW!**

Dual Stripe design also available



### Also available in

XXSJ (3-4yrs) XSJ (5-6yrs)

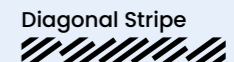
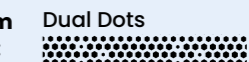
### Ladies Sizes (with a slight capped sleeve)

4/6 (xSmall) 8/10 (Small) 12/14 (Medium) 16/18 (Large)

### Dual Trim Colour Options



**Dual Trim Designs:**



**DUAL**  
TRAINING RANGE



White

Navy



Black

Royal

Red



**NEW!**  
Dual Stripe  
design also  
available



# Dual Polo

## DU018

- » Performance Polyester pique fabric with contoured underarm side panel in a breathable reverse pique fabric
- » Placket neck collar and colour contrast Dual print on both shoulders
- » Branded **VAPADRI™** neck tape
- » Choice of SS and Dual Print colours to suit your branding

### Unisex Sizes

SJ MJ LJ YTH  
S M L XL XXL XXXL XXXXL XXXXXL

### Ladies Sizes (with a slight capped sleeve)

4/6 (xsmall) 8/10 (small) 12/14 (Medium) 16/18 (Large)

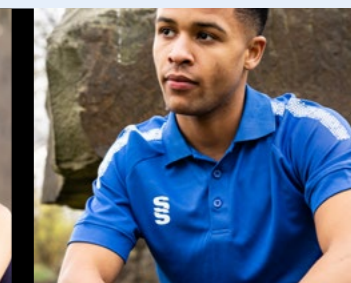
### Dual Trim Colour Options



**Dual Trim Designs:**

Dual Dots

Diagonal Stripe



Navy Marl



**NEW!**  
Dual Stripe design also available



## Dual Gym Shirt DU014

- » Performance polyester marl fabric with contoured underarm side panel in breathable interlock fabric
- » Crew neck collar and contrast colour 'Dual' graphic print on both shoulders
- » Choice of SS and Dual Print colours to suit your branding

### Unisex Sizes

SJ MJ LJ YTH  
S M L XL XXL XXXL XXXXL XXXXXL



Black Marl

Royal Marl

Grey Marl

Royal Marl



**NEW!**  
Dual Stripe design also available



## Dual Performance Top DU013

- » Made from melange Pro-Polyester with a lightly brushed feel and soft inner fleece lining
- » Subtle marl printed body
- » 1/4 Zip neck detail for breathability
- » Dual print on both shoulders and reflective zip detailing
- » Choice of SS and Dual Print colours to suit your branding

### Unisex Sizes

SJ MJ LJ YTH  
S M L XL XXL XXXL XXXXL XXXXXL



Black Marl

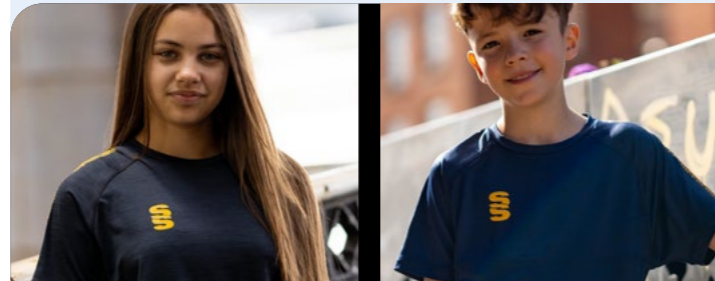
Grey Marl

Navy Marl

### Dual Trim Colour Options



Dual Trim Designs: Dual Dots Diagonal Stripe

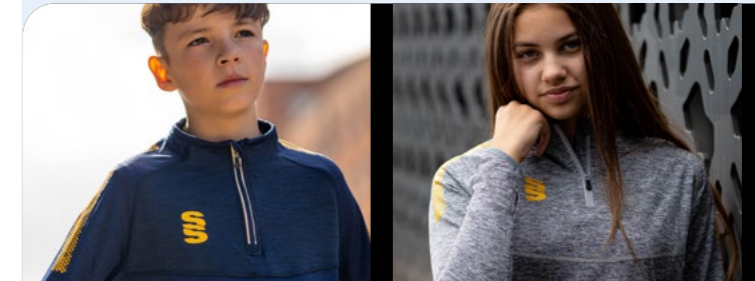


**DUAL**  
TRAINING RANGE

### Dual Trim Colour Options



Dual Trim Designs: Dual Dots Diagonal Stripe



**DUAL**  
TRAINING RANGE



Navy



Royal



Black (Female fit)



Grey

# Dual Zipped Hoodie

## DU012

- » 100% performance polyester and bonded fleece lining
- » Modern slim fit with toggles on hem for adjustable sizes
- » Full zip hoodie with reflective, water resistant zip detail
- » Two large zip pockets with soft fleece lining and elastic binding at sleeve ends
- » Toggle features to keep out the wind
- » French shoulder seam for comfort and dual print to shoulder
- » Choice of SS and Dual Print colours to suit your branding

### Unisex Sizes

SJ MJ LJ YTH  
 S M L XL XXL XXXL  
 XXXXL XXXXXL

**NEW!**

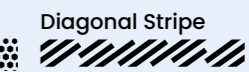
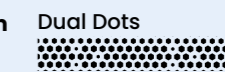
Dual Stripe design also available



### Dual Trim Colour Options



Dual Trim Designs:



**DUAL**  
TRAINING RANGE

# Dual Pro Training Vest

## DU033

- » 100% performance polyester melange super stretch material
- » Nicely fitted shirt perfect for the gym and those warm days training outside
- » Contoured underarm side panel in breathable reverse pique fabric



**Unisex Sizes**  
 SJ MJ LJ YTH  
 S M L XL XXL

Navy

Black

Contoured underarm



# Dual Slim Tek Pants

## DU019

WHITE LABEL  
 • Premium Quality •  
 • Great Price • Your Brand •

- » Interlock Polyester material with Polyester Lycra insert at calf
- » Two invisible zip pockets for security
- » Choice of SS and Dual Print colours to suit your branding

### Unisex Sizes

SJ MJ LJ YTH  
 S M L XL XXL XXXL

### Also available in

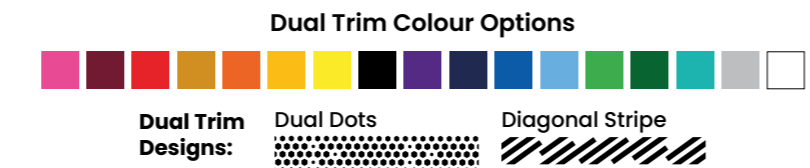
XXSJ (3-4yrs) XSJ (5-6yrs)



Navy

Black

**NEW!**  
 Dual Stripe design also available



# Dual Short

## DU020

WHITE LABEL  
 • Premium Quality •  
 • Great Price • Your Brand •

- » Poly peached Micro-fibre blend with modern shorter leg length, more suited to gym and physical exercise
- » Elasticated hem with drawcord for flexibility and comfort

### Unisex Sizes

SJ MJ LJ YTH  
 S M L XL XXL XXXL



Navy

Black

Royal



# Dual Active Short

## DU029

WHITE LABEL  
 • Premium Quality •  
 • Great Price • Your Brand •

- » Soft feel performance stretchy microfibre material
- » Half leg with poly/lycra inner
- » Now with longer inner pant to be lower than the short

### Unisex Sizes

XXS-UK 4, XS-UK 6, S-UK 8,  
 M-UK 10, L-UK 12, XL-UK 14, XXL-UK 16



Navy

Black

Longer Inner Pant





Black

Navy

Dual Trim Colour Options



Dual Trim Designs:

Dual Dots

Diagonal Stripe

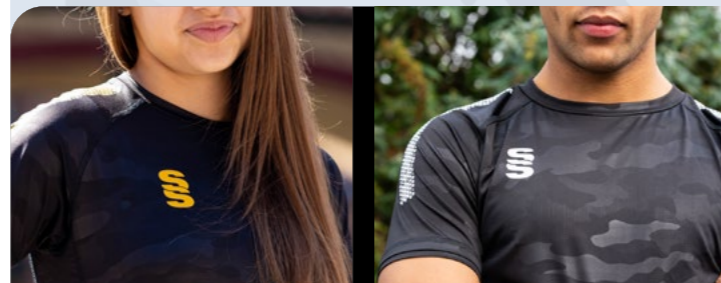
## Camo Training Shirt DU031

- » Performance camo interlock fabric with contoured underarm side panel
- » Forward side seam detail with flat-lock stitching for ultimate comfort
- » Crew neck self fabric collar and raglan seam sleeve and contrast colour graphic print available on shoulders
- » SS logo colour to match the Dual Print

**Unisex Sizes**

SJ MJ LJ YTH  
S M L XL XXL XXXL

**NEW!**  
Dual Stripe design also available



**CAMO**  
RANGE



Navy

Black

Dual Trim Colour Options



Dual Trim Designs:

Dual Dots

Diagonal Stripe

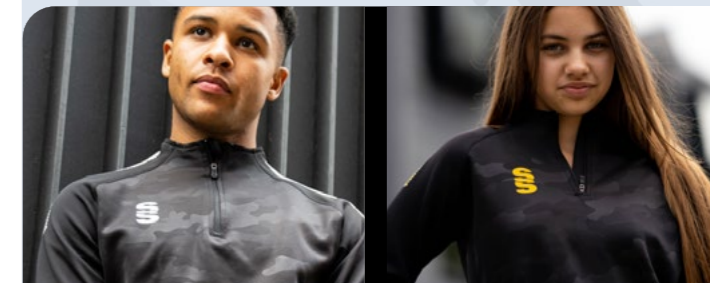
## Camo Performance Top DU032

- » 275 gsm structured soft feel camo woven polyester material
- » Ultra modern fitted ¼ zip collar with fitted sleeves and banded sleeve hems
- » Adjustable draw cords in hem
- » Dual print on both shoulders and reflective zip detailing
- » SS printed to chest to match Dual Print colour

**Unisex Sizes**

SJ MJ LJ YTH  
S M L XL XXL XXXL

**NEW!**  
Dual Stripe design also available

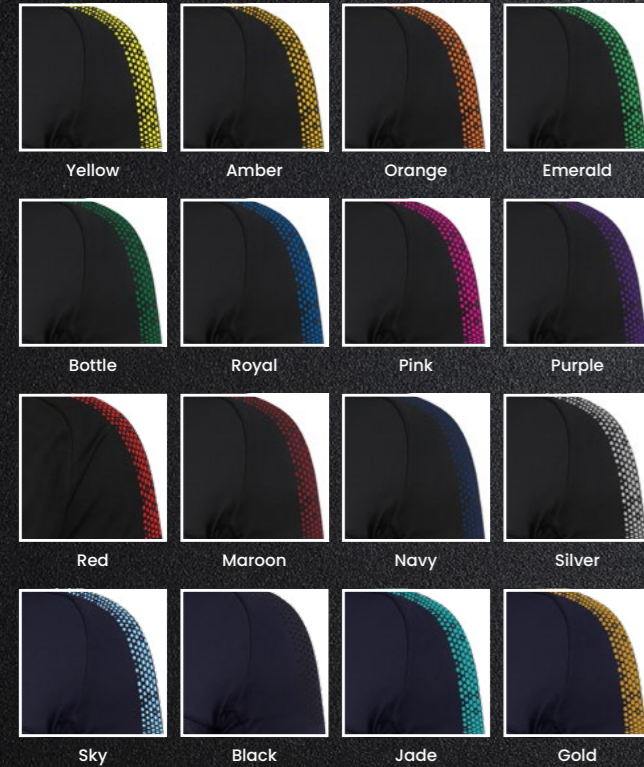


**CAMO**  
RANGE

# FUSE RANGE

## YOUR COLOURS YOUR WAY

Our entire Fuse Range is available in 17 SS colours or choose unbranded - without SS branding



### Fuse Trim Colour Options



Fuse Trim Designs: Dual Dots Diagonal Stripe



Navy  
White  
White

Black  
White  
White

### Fuse Trim Colour Options



Fuse Trim Designs: Dots Diagonal Stripe

## Fuse T-Shirt DU365

- » Performance Polyester pique, crossover V-Neck
- » Forward position side seams with contrast insert
- » Contrast back yoke
- » French seam shoulder construction for comfort and durability
- » Forward side seams with contrasting coloured insert
- » Printed SS logo to chest
- » Fabric weight: 150gsm

### Unisex Sizes

SJ MJ LJ YTH  
S M L XL XXL XXXL

**NEW!**  
Fuse Stripe  
design also  
available



FUSE  
RANGE





Black

Navy



## Fuse Polo Shirt DU366

- » Performance Polyester pique, 3 button placket with 1x1 polyester rib collar
- » Forward position side seams with contrast insert
- » Contrast back yoke
- » French seam shoulder construction for comfort and durability
- » Forward side seams with contrasting coloured insert
- » Printed SS Logo to chest
- » Fabric weight: 150gsm

### Unisex Sizes

SJ MJ LJ YTH  
S M L XL XXL XXXL

**NEW!**  
Fuse Stripe design also available



**FUSE**  
RANGE

## Fuse ¼ Zip Performance Top DU368

- » Made from heavy brushed french terry material to give warmth and comfort
- » 1/4 Zip neck detail for breathability
- » Dual print on both shoulders and reflective zip detailing
- » Personalise the Fuse range with SS logo colour to match the chosen Dual Print
- » Printed SS logo to chest
- » Fabric weight: 275gsm

### Unisex Sizes

SJ MJ LJ YTH S M L XL  
XXL XXXL XXXXL XXXXXL

### Also available in

XXSJ (3-4yrs) XSJ (5-6yrs)



Navy

Black



## Active ¼ Zip Maroon Performance Top WL001

- » Made from heavy brushed french terry material to give warmth and comfort
- » 1/4 Zip neck detail for breathability
- » Reflective zip detailing
- » Fabric weight: 275gsm



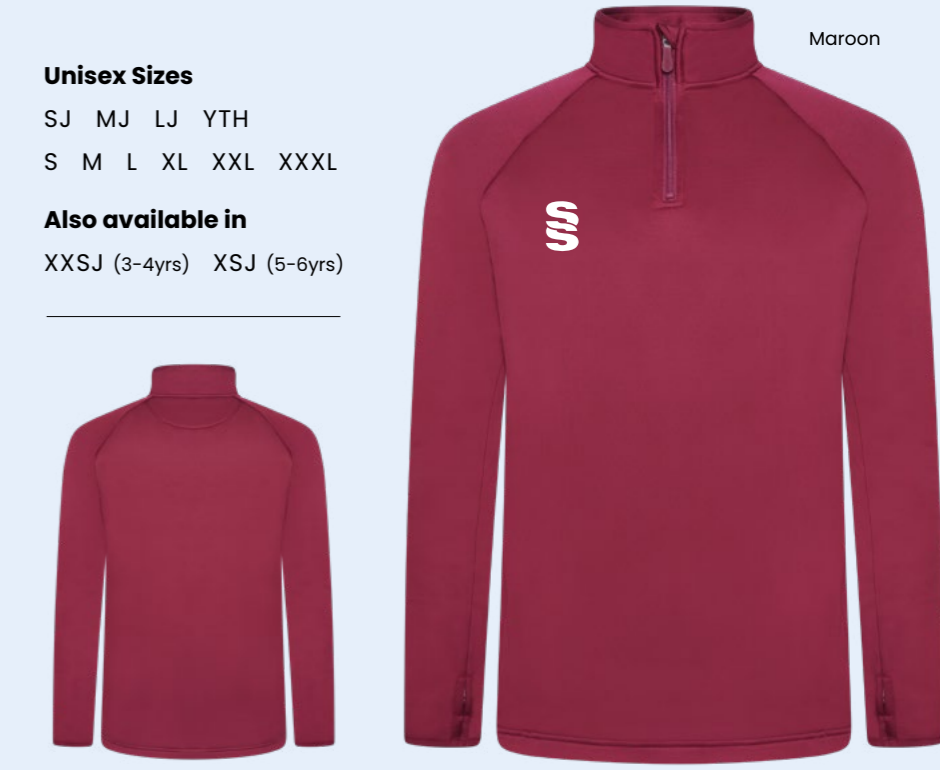
Available without SS branding and includes tear out label.

### Unisex Sizes

SJ MJ LJ YTH  
S M L XL XXL XXXL

### Also available in

XXSJ (3-4yrs) XSJ (5-6yrs)



Maroon





Black

Navy

## Fuse Hoodie

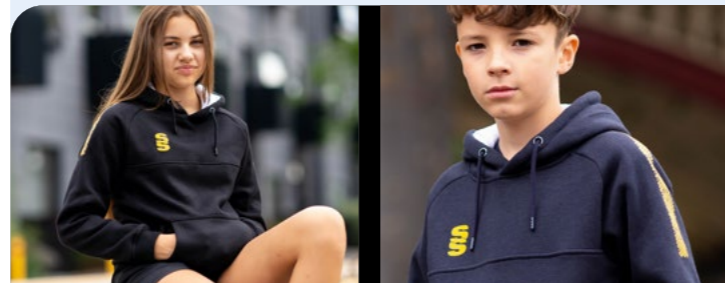
DU367

- » Polyester and Cotton fabric blend
- » French seam shoulder construction for comfort and durability
- » Branded eyelets with tube draw cord
- » Large front hoodie pocket
- » Forward side seams with contrasting insert
- » Personalise the Fuse range with SS logo colour to match the chosen Dual Print
- » Printed SS logo to chest
- » Fabric Weight: 300gsm.

### Unisex Sizes

SJ MJ LJ YTH  
S M L XL XXL XXXL

**NEW!**  
Fuse Stripe  
design also  
available



**FUSE**  
RANGE

## Fuse Shorts

SUR457

- » Performance Polyester
- » Matches to the Polo and T-Shirt in the same range
- » No pockets
- » Elasticated hem for comfort

### Unisex Sizes

SJ MJ LJ YTH  
S M L XL XXL XXXL

### Also available in

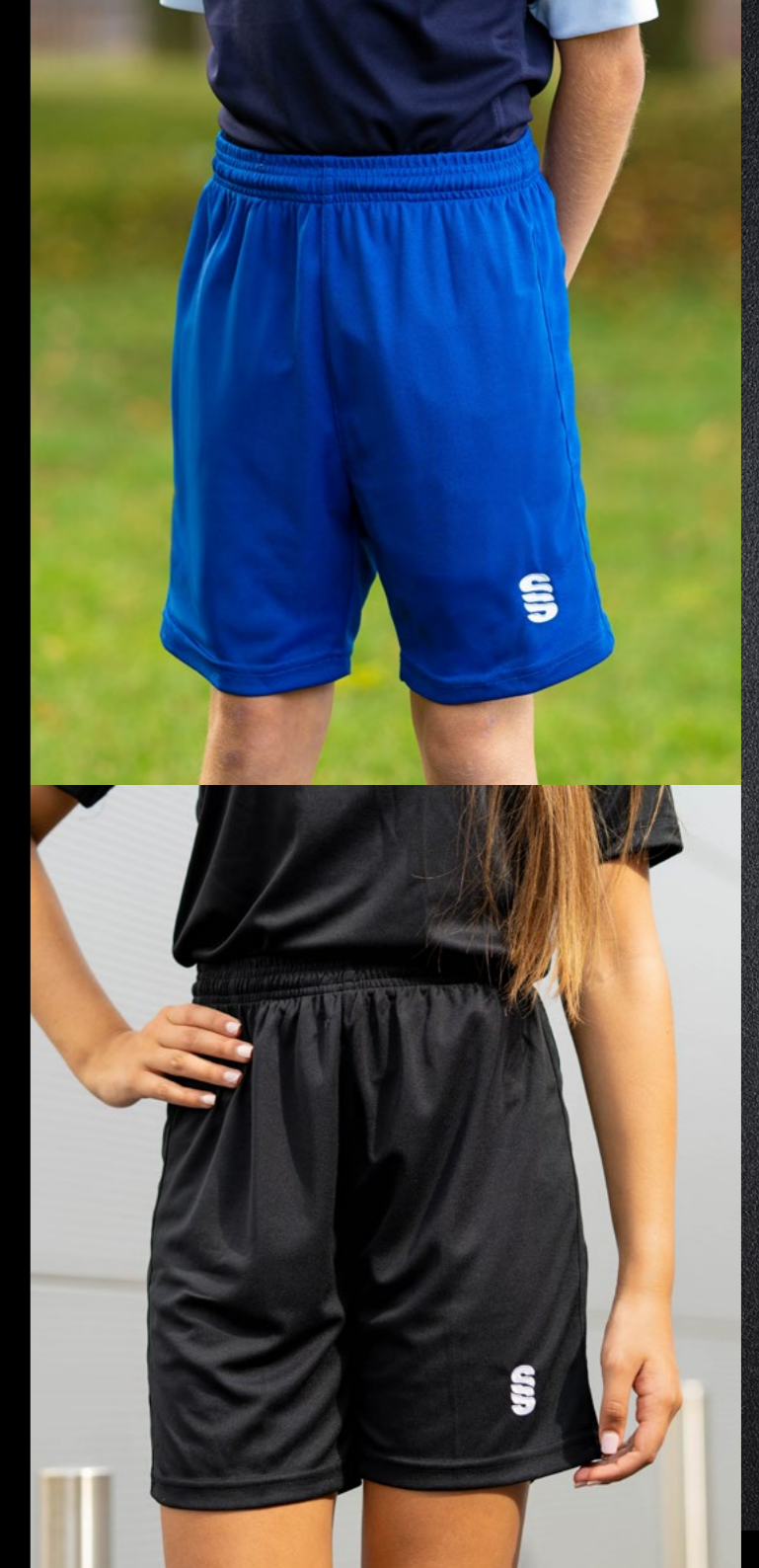
XXSJ (3-4yrs) XSJ (5-6yrs)



Navy

Black

Royal



SURRIDGE

### Fuse Trim Colour Options



Fuse Trim  
Designs:

Dots



Diagonal Stripe





Navy

## Dual Training Jacket DU002



- » Wax Coated outer shell, light and fully waterproof
- » Reflective, water resistant zip detail and 2 zip pockets
- » Mesh lined hood with adjustable toggles
- » Underarm vents to stay breathable but warm

### Unisex Sizes

SJ MJ LJ YTH  
S M L XL XXL XXXL  
XXXXL XXXXXL



Red

Royal

Black



Black

## Dual Rain Jacket DU003



- » Thick Wax Coated outer shell, rain-proof and soft fleece lined
- » Two zip pockets and placket zip cover on body and pockets
- » Taped seams so fully waterproof

### Unisex Sizes

SJ MJ LJ YTH  
S M L XL XXL XXXL  
XXXXL XXXXXL



Navy



# BLADE TRAINING RANGE

A unique stock training range  
available in 12 different colourways

## Blade Training T-Shirt SUR365









- » Regular fit, performance polyester pique, crossover V-Neck
- » Forward position side seams with contrast insert
- » Contrast back yoke with embroidered SS logo
- » French seam shoulder construction for comfort and durability
- » Forward side seams with contrasting coloured insert.
- » Embroidered Surridge logo to chest
- » Fabric weight: 150gsm

### Unisex Sizes

SJ MJ LJ YTH  
S M L XL XXL XXXL

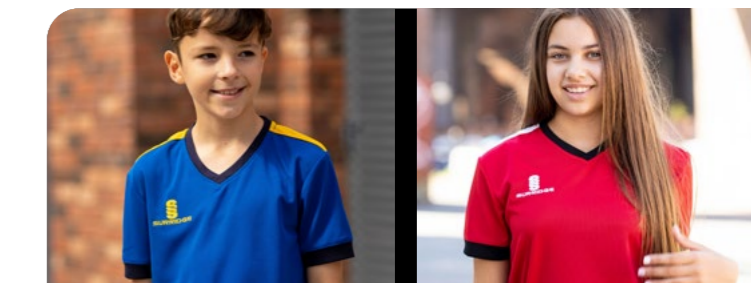
### Colours

Shirt/Sleeve/Side Seam

 Black Amber White	 Black Orange White	 Black Purple White	 Red Black White	 Emerald Black White
 Royal Navy White	 Royal Navy Amber	 Emerald Navy White	 Bottle Navy Amber	 Sky Navy White
 Maroon Navy White	 Red Navy White	 White Navy		



Contrast Back  
Yoke with SS



BLADE  
TRAINING RANGE



Contrast Back Yoke with SS

## Blade Polo Shirt SUR366

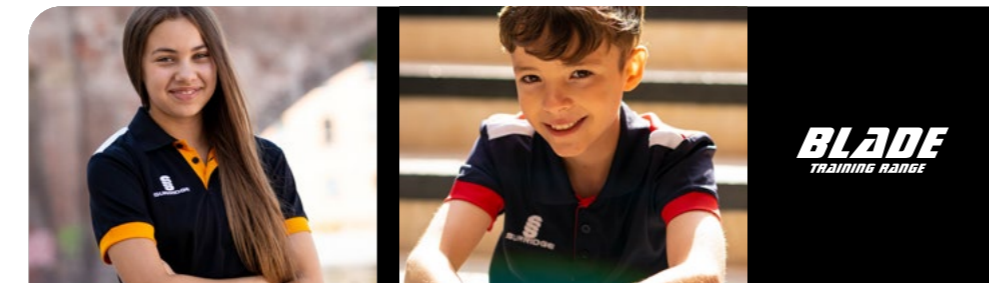
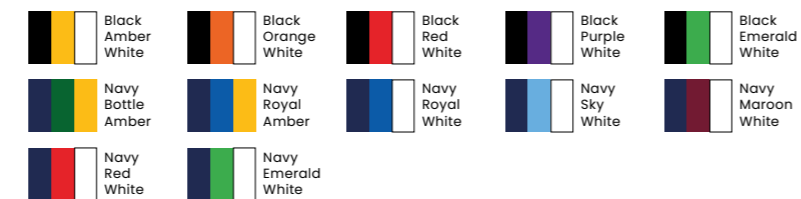
- » Performance Polyester pique
- » 3 button placket with 1x1 polyester rib collar
- » Forward position side seams with contrast insert
- » Contrast back yoke with embroidered SS logo
- » French seam shoulder construction for comfort and durability
- » Forward side seams with contrasting coloured insert
- » Embroidered Surridge logo to chest
- » Fabric weight: 150gsm

### Unisex Sizes

SJ MJ LJ YTH  
S M L XL XXL

### Colours

Shirt/Sleeve/Side Seam



## Blade Hoody SUR367

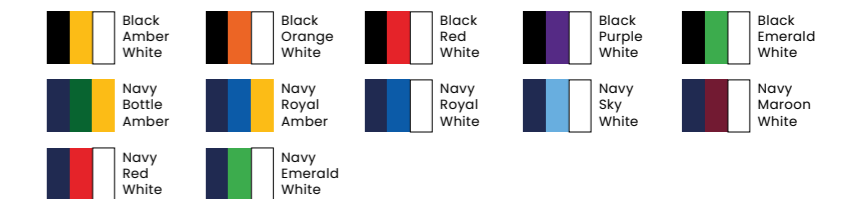
- » Polyester and Cotton fabric blend
- » Contrasting inner hood lining and chest panel
- » French seam shoulder construction for comfort and durability
- » Branded eyelets with tube draw cord
- » Large front hoodie pocket
- » Forward side seams with contrasting insert
- » Embroidered Surridge logo to chest
- » Fabric weight: 300gsm

### Unisex Sizes

SJ MJ LJ YTH  
S M L XL XXL

### Colours

Hoody/Chest/Side Seam





## Blade Performance Top SUR368

- » Performance Polyester French Terry material
- » Contrast chest panel and contrast back panel
- » Half Zip with SS performance locking rubber zip toggle
- » French seam shoulder construction for comfort and durability
- » Forward side seams with contrasting colour insert
- » Embroidered Surridge logo to chest
- » Fabric Weight: 250gsm

### Unisex Sizes

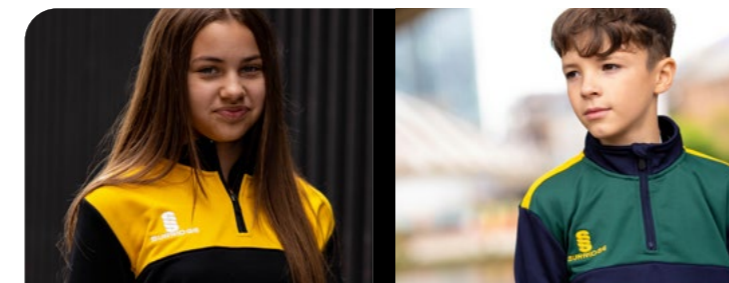
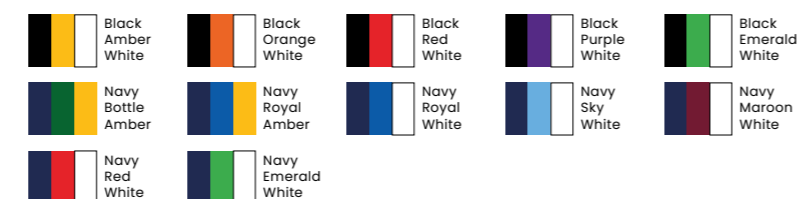
SJ MJ LJ YTH  
S M L XL XXL



Contrast Back Yoke with SS

### Colours

Top/Chest/Side Seam



**BLADE**  
TRAINING RANGE

## Poplin Pant SUR381

WHITE LABEL

- Premium Quality •
- Great Price • Your Brand •

- » Soft microfibre poplin outer
- » Straight leg traditional kit
- » Extra large ¾ side leg zip coming up to just below the pocket
- » Embroidered Surridge logo to left thigh
- » Soft cotton inner lining
- » Lycra gusset for flexibility
- » 2 zipped pockets
- » Mens and Ladies fits

### Unisex Sizes

SJ MJ LJ YTH  
S M L XL XXL XXXL

### Ladies Sizes

8 10 12 14 16 18



## Blade Slim Tek Pants SUR378

- » French Terry material with polyester lycra insert at calf
- » Two invisible zip pockets for security
- » Embroidered Surridge logo to thigh

### Unisex Sizes

SJ MJ LJ YTH  
S M L XL XXL



# Ripstop Track Pant

## SUR375

- » Matte texture Ripstop-Polyester blend with mesh upper lining and Nylon Tafeta lower lining
- » Lycra gusset for flexibility and comfort with a drawcord
- » More modern slimmer leg fit from knee downwards
- » 12" side seam lower zip at hem

Available in  
Mens and Ladies Fits

### Unisex Sizes

SJ MJ LJ YTH M L XL XXL

### Ladies Sizes

8 10 12 14 16 18

Black

Navy



# Performance Legging

## DU028

- » 85% Polyester - 15% Elastane
- » 2 Side pockets for mobile and two smaller pockets (one with zip) for personal belongings
- » Printed Surridge logo to thigh
- » Available with and without SS logo
- » Dual print can be added for extra colour to calf

### Ladies Sizes

7-8 9-10 11-12

8 10 12 14 16 18

Navy



### Dual Trim Colour Options



Dual Trim  
Designs:

Dual Dots

Diagonal Stripe

WHITE LABEL  
• Premium Quality •  
• Great Price • Your Brand •

# Pocket Training Ripstop Shorts

## SUR331

- » Polyester Ripstop wind resistant fabric with 2 pockets
- » Embroidered Surridge logo to thigh
- » Fabric Weight: 115gsm

Available in  
Mens and Ladies Fits

### Unisex Sizes

SJ MJ LJ YTH S M L XL XXL

### Ladies Sizes

8 10 12 14 16 18



Navy

Black

# Blade Training Shorts

## SUR370

- » 100% Polyester
- » 2 Pockets
- » Embroidered Surridge logo to thigh
- » Fabric Weight: 160gsm

### Unisex Sizes

SJ MJ LJ YTH

S M L XL XXL



Black

Navy

# Blade Skort

## SUR380

- » 100% Performance Pique Skort, made with high quality polyester with an elastane inner lining
- » Embroidered Surridge SS logo to the left hem

### Ladies Sizes

4 6 8 10 12 14 16 18

**Bespoke Badge Option:**  
Add your School Crest in full colour. Sponsor logos can also be added to the back left and right of the skort.



Red



Navy

Black

Royal

# Baseball Cap

SUR421

- » Classic fitted cap with comfortable five panel design
- » Eyelet mesh back panels for improved air flow & ventilation
- » Interior woven tape reinforcement for strength & durability
- » Adjustable tab at the back with hook & loop closure for custom fitting
- » Embroidered SS logo in white to left side of cap

### Size

One Size



Red

### Colours

Classic Baseball Cap



# Fuse Flexi Cap

SUR470



- » Modern shaped cap, lighter, sleeker, smarter and more comfortable
- » Its 6 panels are well finished, combining a lightweight visor fabrication and new three-layer multifunction sweatband
- » Inner sweatband and elastic fitting gives the most comfortable fit there is

### Unisex Sizes

S/M L/XL



Bottle

### Colours

Fuse Flexi Cap



# Womens Dual Cycle Shorts

DU041

- » The Performance cycle shorts are made of fantastic comfortable 85% Polyester and 15% Elastane material
- » There is no grinning on the material when stretched
- » They feature two side pockets for mobile phones
- » Printed Surridge SS logo is situated on the left thigh

### Ladies Sizes

7-8 9-10 11-12

6 8 10 12 14 16 18



Navy

Black

17 SS Colour Options



# Dual Hijab

DU030

- » Lightweight performance polyester material
- » Highly breathable and very cool to wear
- » SS print on right hand side

### Bespoke Badge Option:

Add your School Crest in full colour

### Ladies Sizes

XS/S M/L



Navy



Your School Crest Here

Black

17 SS Colour Options







Black

Navy

17 SS Colour Options



## NEW! Dual Elite 1/4 Zip Training Jacket DU381



- » Modern overhead rain jacket with hood
- » Hoody and body is lined in the same material which has a light brush for a little warmth
- » The arms are well fitted for a modern look
- » Both front pockets are over sized with the same brushed lining for extra warmth
- » The material is matt and waterproof

### Unisex Sizes

SJ MJ LJ YTH

S M L XL XXL XXXL

WHITE LABEL

- Premium Quality •
- Great Price • Your Brand •



EST. 1867



Navy

17 SS Colour Options



## NEW! Dual Puffer Jacket DU181



- » A cosy, highly fashionable, fitted and soft to touch down feel jacket with hand filled poly wadding for superior warmth
- » StormDri water repellent rip stop micro peach outer
- » The perfect lightweight jacket for cold and damp winter days

### Mens Sizes

S M L XL XXL XXXL

### Ladies Sizes

XS S M L XL XXL



Ladies Back View  
Navy



Mens Back View  
Navy



EST. 1867

## Supersoft Padded Jacket R233



- » Showerproof and Windproof
- » Hinged locker patch in neck for self-branding, soft bound cuff and hem, contrast lining and trim
- » Reflective hip detail with integral hood, full front zip
- » Zip pockets and hangtag
- » Solid colours ideal for schoolwear, easy to pack, super soft, lightweight and warm

### Mens Sizes

S M L XL XXL XXXL

### Ladies Sizes

XS S M L XL XXL

### Ages

2/3 3/4 5/6 7/8

9/10 11/12 13/14



Black

### 17 SS Colour Options



## Holkham Down Feel Jacket R181



- » A cosy, highly fashionable, fitted and soft to touch down feel jacket with hand filled poly wadding for superior warmth
- » StormDri water repellent rip stop micro peach outer
- » The perfect lightweight jacket for cold and damp winter days

### Mens Sizes

S M L XL XXL XXXL

### Ladies Sizes

XS S M L XL XXL

Navy



Black



### 17 SS Colour Options



## Core Nova Lux Padded Gilet R223



- » Great cold weather protection
- » Super warmth without any weight
- » The Nova Lux padded bodywarmer offers comfort and style, the perfect layering gilet

### Unisex Sizes

XS S M L

XL XXL XXXL

Black



Navy



### 17 SS Colour Options





## Ice Bird Padded Gilet R193



- » The gilet version of the modern classic design
- » This super lightweight and perfectly tailored contemporary gilet offers amazing warmth without weight from its super air-soft handle and hand filled polyester wadding

### Mens Sizes

S M L XL XXL

### Ladies Sizes

XS S M L XL XXL



WHITE LABEL

- Premium Quality •
- Great Price • Your Brand •

Available without SS branding and includes tear out label.



## NEW! Active Gilet WL004



- » Showerproof, breathable and windproof
- » Soft elasticised armhole and hem
- » Contrast underarm panelling made from heavy brushed french terry material
- » Full front zip with chin guard
- » Two zip-closing pockets
- » Comfortable longer length
- » 2 inner zips for print and embroidery access

### Unisex Sizes

YTH S M L XL XXL XXXL XXXXL XXXXXL



# NEW! Active Padded Jacket WL003



- » 100% Polyester showerproof material
- » Wind resistant with padded lining
- » 2 side zipped pockets
- » Sleeves have inner elasticated cuffs
- » Inner zip pocket
- » 2 inner zips for print and embroidery access
- » Zip to reverse for print and embroidery access

### Unisex Sizes

SJ S M L XL XXL XXXL XXXXL XXXXXL



17 SS Colour Options



**WHITE LABEL**  
 • Premium Quality •  
 • Great Price • Your Brand •

Available without SS branding and includes tear out label.



Navy Reverse

Navy

# NEW! Run Out Top DU001

- » 100% Polyester Bonded Run Out Top

*This item may be available with trims. If applicable, you may choose your own colour and customise the position in the personalise menu. Image may not reflect your chosen colour and is for illustration purposes only.*

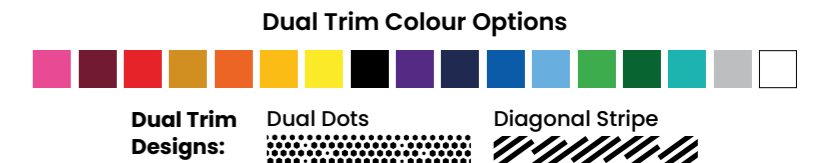
### Unisex Sizes

SJ MJ LJ YTH  
 S M L XL XXL XXXL XXXXL XXXXXL



Black

**NEW!**  
 Dual Stripe design also available



**Dual Trim Designs:**  
 Dual Dots  
 Diagonal Stripe



Black



Navy

## NEW! Fleece Robe WL002



- » Waterproof and windproof outer shell fabric made from 100% polyester
- » Super-warm synthetic lambswool lining made from 100% polyester
- » Tailored, fitted sleeves with hook and loop fasteners at the wrist
- » Full length 2-way reversible zip
- » Minimal sealed seam construction
- » Deep, lined external zip pockets
- » 'A5' size internal, soft-lined pocket
- » Internal waterproof zip entry pocket - ideal for phone/wallet
- » 2 inner zips for print and embroidery access
- » Zip to reverse for print and embroidery access

*Designed to let you get changed anywhere, whilst protecting you from the elements, Thermal Robe is an essential piece of kit for all outdoor activities. The long sleeve design provides extra warmth and is ideal for those waiting to compete or watching sporting events. The jacket can be used multiple times throughout the day, over wet kit, without the need for drying between uses.*

*Thermal Robe is one tough bit of kit. It's been designed and tested to stand the wear and tear of an active lifestyle, cold conditions and any challenge you face.*

### Unisex Sizes

XS/S M/L XL/XXL

### 17 SS Colour Options



Black

Navy



Black



Navy



Available without SS branding and includes tear out label.



Black

## NEW! Active Long Padded Jacket WL005



- » 100% Polyester showerproof material
- » Wind resistant with padded lining
- » 2 side zipped chest pockets
- » 2 inner zips for print and embroidery access
- » Zip to reverse for print and embroidery access
- » Double ended front zip allows for comfort while seated

### Unisex Sizes

YTH S M L XL XXL XXXL XXXXL XXXXXL



WHITE LABEL  
 • Premium Quality •  
 • Great Price • Your Brand •

Available without SS branding and includes tear out label.

## Dual Baselayer Legging DU040

- » Baselayers are tight fitting garments which help stabilize muscles to help improve performance
- » SS logo available in 17 SS colours

### Unisex Sizes

SJ MJ LJ YTH  
 S M L XL XXL

WHITE LABEL  
 • Premium Quality •  
 • Great Price • Your Brand •

Applies to all items on this page.

## Dual Baselayer Short DU035

- » Baselayers are tight fitting garments which help stabilize muscles to help improve performance
- » SS logo available in 17 SS colours

### Unisex Sizes

SJ MJ LJ YTH  
 S M L XL XXL



## Dual Long Sleeve Baselayer DU034

- » Baselayers are tight fitting garments which help stabilize muscles to help improve performance
- » SS logo available in 17 SS colours

### Unisex Sizes

SJ MJ LJ YTH S M L XL XXL



## NEW! Mouth Guard SUR503

» Eva Material Mouth guard in a Poly Propylene box

**Unisex Sizes**  
Junior Adult



## NEW! Shin Guards SUR502

» Plastic moulded shin guards with soft foam protection for comfort

**Unisex Sizes**  
S M L



## Snowstar Beanie BC450

» 100% Soft-touch acrylic  
» Dual style - cuffed or slouch  
» Two-tone pom pom  
» Double-layer knit  
» Ribbed cuff  
» Hand wash only

**Size**  
One Size

**Bespoke Option:**  
Scan the QR code below  
or visit [www.surridgesport.com/kitbuilder](http://www.surridgesport.com/kitbuilder)



**NEW & IMPROVED!**

## Dual Backpack DU004

- » Over shoulder quality backpack made of polyester material
- » Boot compartment and mesh panel drink compartment
- » Reinforced shoulder straps plus chest strap
- » Cushioned straps and handles
- » Internal laptop compartment

**Size:** 50cm x 38cm



Available without SS branding

17 SS Colour Options



## Small Holdall SUR364

- » Stylish Holdall with plenty of space and includes wet compartment
- » 100% modern nylon with 2 end pockets

**Size**

64cm x 27cm x 30cm



## Custom-Made Ties



- » 100% Polyester. Minimum order applies.
- » What makes our ties special is that they are completely custom-made to your design, our team will help guide you through the easy process of personalising your ties from start to finish
- » We can manufacture virtually any design incorporating your club name, logo, design or message to meet your individual specification
- » Our custom-made ties are extremely affordable and finished to a very high standard



Products shown are example items only. Scan the QR code above or visit: [www.surridgesport.com/en/kitbuilder#/catalogue/ties](http://www.surridgesport.com/en/kitbuilder#/catalogue/ties)

## NEW! Toiletry Bag BG332

- » A travel essential, sized for anything from toiletries to tech accessories, a reversed PU zip adds to the clean architectural design, while a minimal, muted colour palette enhances gender-neutral appeal
- » 100% Recycled polyester with matte-look PU coating
- » Water-repellent fabric

**Bag Capacity:** 4 litres

**Dimensions:** 25 x 12 x 15cm

**Washing Instructions:** Sponge clean only



**Bespoke Badge Option:**

Add your Club Badge in full colour. Sponsor logos can also be added.



**Surridge Sport**

# BESPOKE BAG RANGE

Ready for school or after-school sport our range of bags are easy to carry and comfortable.

We have a range to suit all ages in a wide selection of designs, colours and styles. Whatever your favourite sport, our range will give you what you need.

Customise your bag by adding your School Crest in full colour. Sponsor logos can also be added.

Visit:  
[www.surridgesport.com](http://www.surridgesport.com)  
for more details.



For more details visit [www.surridgesport.com](http://www.surridgesport.com)  
Compliment your kit design by adding one of our bespoke sports bags.



## Playing Socks SURF006

- » The Match socks are made with compression zones to add stability and shock absorption
- » Alongside the compression zones, the sole is made from cotton for padding and extra support on the ankle, with the rest of the sock made from high quality Polyester/Acrylic
- » Inclusive SS Logo to rear of ankle

**Unisex Sizes**  
12-2 3-6 7-11



SS Logo to rear of ankle

Compression zones add extra support and stability



Red Black Emerald Maroon Navy (Sport)



Bottle Navy (Blade) Orange Royal Yellow

## Surridge Single Band Sock SURF027

- » The Single Band Socks feature compression zones to add stability, shock absorption and superb comfort with an extra padded cotton sole
- » Available in a range of colours
- » Surridge logo to reverse of all socks

**Unisex Sizes**  
12-2 3-6 7-11



Surridge Logo to reverse of sock

Compression zones add extra support and stability



Amber Black Black White Emerald White Emerald White Red Black Yellow Royal



Maroon White Navy/Red White Navy Sky Navy White Red White Sky White

# Surridge Quarter Sock

SUR480

- » A modern quarter sock made with Acrylic, a cotton sole for extra comfort
- » Printed gripper on the sole for extra grip
- » A perfect pair of socks for playing football, rugby or gym wear
- » Minimum order of 300pcs

## Unisex Sizes

3-6 7-11



Royal

Red

Emerald

**Bespoke Badge Option:**  
You can replace the SS logo with your own School Crest for a more bespoke look. Grippers will also match to School Crest.



White



Maroon

Black

Navy



## EXCLUSIVE VAPADRI™ Technology Designed for Athletes

ECODRI is an exclusive range of materials made with VAPADRI™ technology for Surridge Sport and other major sports brands. EcoDri is a 100% recycled material that is used in the dye sublimated process for most playing garments. Surridge Sport can offer an EcoDri material for all playing garments.

EcoDri is made from 100% recycled polyester yarn, produced from water bottles. This process is managed through our own research and development with our material factories in the Far East. All the EcoDri material is made with VAPADRI™ technology, meaning that the performance of the material is still to the highest standards that we offer. The EcoDri material is still at a premium in price but we are convinced that our pricing is still the most competitive on the market against our competition.

SS  
EST. 1867

# ECO DRI

BY

VAPADRI™

THIS MATERIAL IS MADE FROM 100% RECYCLED POLYESTER YARN, PRODUCED FROM RECYCLED WATER BOTTLES.

VAPADRI™

This performance fabric is designed for athletes. Garments made with VAPADRI™ technology can help the wearer stay "DRI" and as a result create zero distraction, allowing you to concentrate 100% on the game.

- LIGHTWEIGHT
- WICKING
- BREATHABLE
- ANTI-STATIC
- MACHINE WASHABLE
- FAST DRYING

SURRIDGGE

# Create Your Own Club Webshop



## Completely Free

No additional charges for setting up your own club webshop.



## Easy Personalisation

Add optional extras such as print, embroidery, initials, names and numbers.



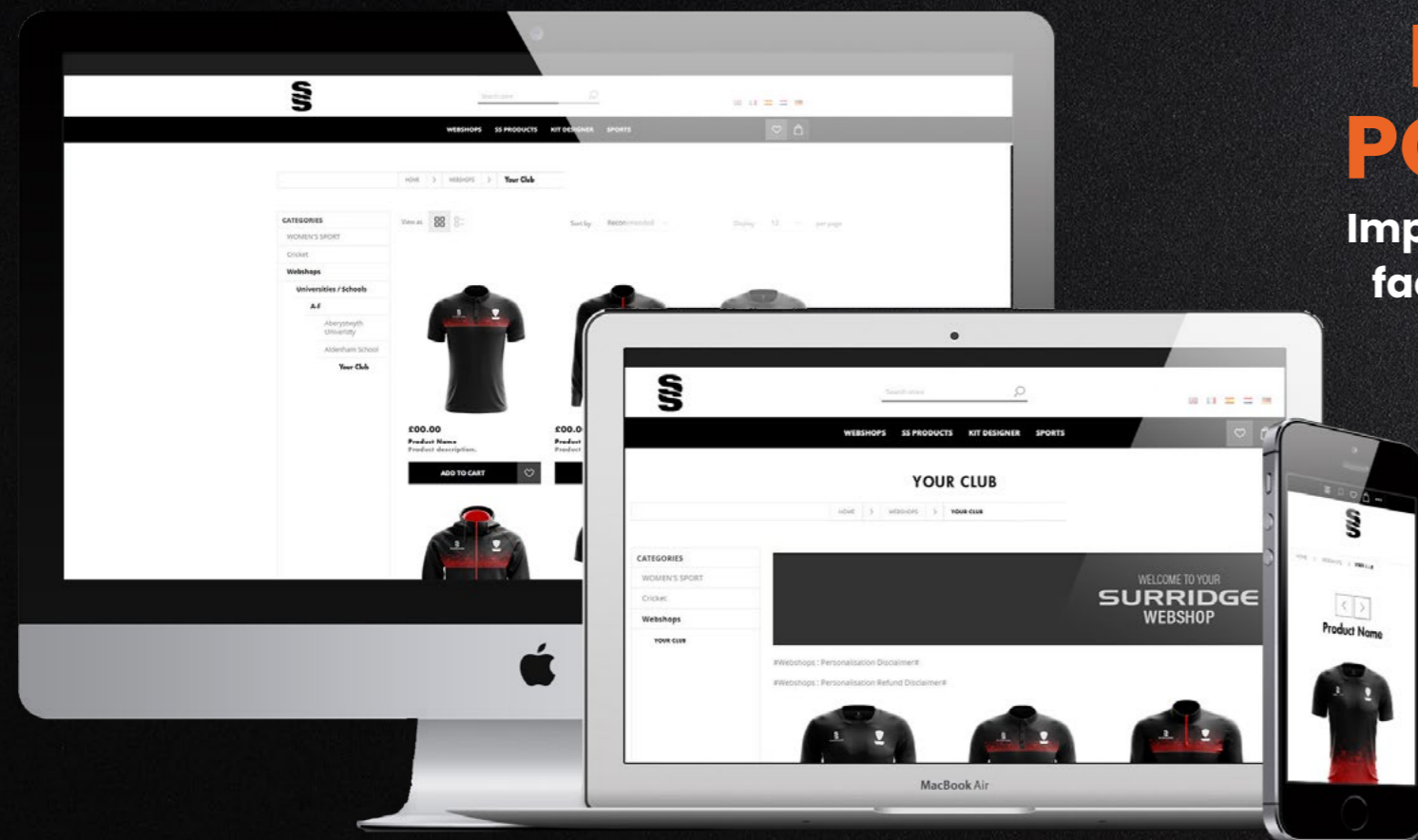
## Hassle Free

No need to collate team orders as everyone can order individually.



## Quick Lead Times

Stock items have a fast turnaround within 10 working days from order placement.



# NEW TRADE PORTAL 2025

Improved styling, lots more facilities and functionality



EST. 1867

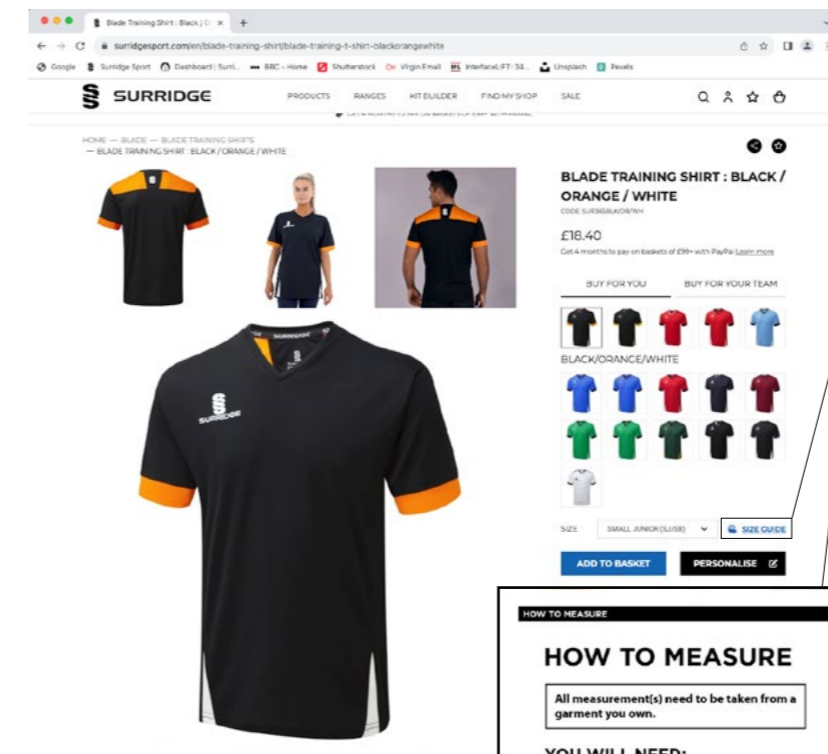
WWW.SURRIDGESPORT.COM

*Crafted by Surridge*

# SIZE GUIDES

All products requiring a size guide have their own individual guide and information on How To Measure on the chosen product web page (See example below)

1). Simply visit [www.surridgesport.com](http://www.surridgesport.com) or scan the QR Code bottom left



2). Select the chosen product, ie: Blade Training Shirt plus colour

3). Click on:

**SIZE GUIDE**

Which will then take you to the product size guide window shown below



Scan me from your device



EST. 1867

### HOW TO MEASURE

All measurement(s) need to be taken from a garment you own.

**YOU WILL NEED:**

- TAPE MEASURE**  
With elastic ends (cm and mm)
- T-SHIRT YOU OWN**  
A garment you own, from any brand, with a comfortable fit.

- Find a T-shirt you own:**  
Choose a T-shirt you currently own (any brand) which is the most comfortable fit for you.
- Chest Measurement:**  
Lay the top down on a flat surface and measure the distance across the T-shirt, from one under arm to the other, as shown in point A.

**SIZE CHART\*** (all measurements given in cm)

MEASUREMENT DESCRIPTION	XS	S	M	L	XL	XXL	XXXL	4XL	5XL
ALL MEASUREMENTS IN METRIC (CM)	84cm	91cm	98cm	106cm	114cm	122cm	130cm	138cm	146cm
CHST	36	37	38	40	42	44	46	48	50

\* Please allow for a plus or minus 1-2 cm tolerance in our garments. Material is also a factor in how a garment can fit you. We will have more details in the product description regarding the material stretch. If the material is stretchy then you can wear the garment as a tighter fit as the material will stretch. Please be aware that the above measurements are of the garment and not of your body.

# WASHING INSTRUCTIONS

Surridge Sport garments are manufactured from top quality fabrics. All fabrics & logos undergo stringent quality tests to ensure durability and wash-ability. They will last for many years if properly cared for. When washing garments always refer to the instructions on the garment label.

## Playing Kits

First wash – Always wash shirts, shorts and socks inside out & separately to remove surface dye.

Avoid leaving kits folded or bundled together for any length of time whilst damp or soiled. Remove excess mud and wash as soon as possible after use to avoid stains from setting.

Garments may discolour due to staining by substances such as mud, grass, petroleum jelly etc, which may not entirely be removed by washing alone. Treat stains directly with a stain remover as soon as possible.

Take care not to use stain remover on transfers applied to the garment as this may effect the quality of the print. Some of the toughest stains may require more than one treatment.

- Do not over load the washing machine and always wash light and dark colours separately.
- Do not wash above the temperature stated on the garment label. (many items 30°C)
- Do not use fabric softener.
- If the garment can be tumble dried (see care label) always tumble dry cool.
- Never iron printed motifs

## Training Wear / Outer Wear

Dirt on outer wear (padded jacket, rain jacket, training jacket) should be wiped off with a damp cloth. These garments do not require regular washing as this will remove the shower proofing. If necessary wash inside out, no hotter than 30 degrees on a synthetic wash.

- Do not use fabric softener.
- Do not tumble dry.
- Never iron printed motifs.

Surridge Sport does not accept liability for discolouration or damage to garments due to incorrect laundering.

+44 (0) 1282 418 418



sales@surridgesport.com



SDL Group Ltd, Britannia Centre,  
Network 65 Business Park, Burnley, Lancashire, BB11 5ST



EST. 1867

*Crafted by Surridge*

W W W . S U R R I D G E S P O R T . C O M



All information within this catalogue was correct at the time of production and is subject to change without prior notice.

